



# GAS DISTRIBUTION CATALOG



[www.isco-pipe.com](http://www.isco-pipe.com) | 800-633-7131



# TABLE OF CONTENTS

## ELECTROFUSION FITTINGS

- Electrofusion Branch Saddles .....5
- Electrofusion Couplings .....6
- Electrofusion Elbows.....7
- Electrofusion Endcaps.....8
- Electrofusion Reducers .....9
- Electrofusion Tees..... 10

## BUTT FUSION FITTINGS AND FABRICATION

- Molded Butt Fusion Fittings .....12
- Butt Fusion Reducing Tees.....13
- Polyflow Ball Valve .....14
- PE Fabrication.....15

## CLAMPS

- Highland Pivoting Electrofusion Clamp .....17
- Compact Clamps.....18
- Highland Straight Clamps - IPS.....19

## ELECTROFUSION MACHINES

- Supercell .....21
- Vortex .....22
- MiniMaxx .....23
- BatteryFuse .....24

## TOOLS AND HOT TAP

- Rotary Peelers .....26
- PolyPeel.....27
- PolyTapp (Hot Tapping).....28
- PolyTapp .....29

## TAPPING TEES AND ACCESSORIES

- Standard Tapping Tee .....31
- HV Tapping Tee .....32
- HV Tapping Tee Tools.....33
- Tapping Tee Accessories .....34
- Tapping Tee Cutters.....35



# TABLE OF CONTENTS

## STEEL CONTROL FITTINGS

Spherical Weld Tees - ANSI 150.....37  
Spherical Weld Tees - ANSI 300.....38  
Weld Fittings - ANSI 150.....39  
Weld Tees - ANSI 150 .....40

## STEEL PRODUCTS

Steel Fabrication .....42  
Carbon Steel Filter.....43  
Carbon Steel Strainer .....44-45

## MISCELLANEOUS

Bag Stop Fittings .....47  
HS 300 Valves.....48  
Purge Equalization .....49

# Electrofusion Fittings



# MTD

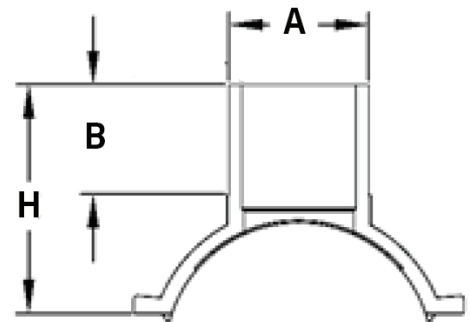
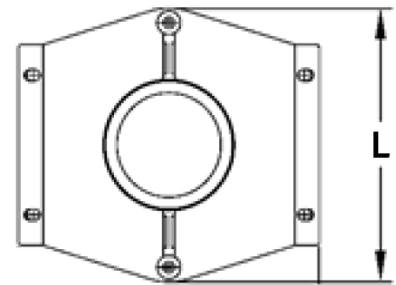
## EF BRANCH SADDLES

PE4710 | 4.7MM TERMINALS | ASTM F1055, F2897, D2513 & D3350



MTD EF Branch Saddles are designed to be as safe and efficient as possible. With a variety of sizes, both size-on-size and reducing, each saddle includes an integrated clamp for easy installation. As a universal fitting, our couplings can be fused, 40v fusion, via barcode, dedicated resistor, or manually.

PART NO.	SIZE [in]	A [min]	B [min]	H [min]	L [min]
TRl1155	3 IPS x 2 IPS	2.37	3.11	5.25	6.33
TRl1160	4 IPS x 2 IPS	2.37	2.55	5.63	6.22
TRl1165	4 IPS x 4 IPS	4.50	3.54	6.81	7.83
TRl1170	6 IPS x 2 IPS	2.37	4.13	8.85	6.29
TRl1175	6 IPS x 4 IPS	4.50	3.62	8.26	9.25
TRl1176	6 IPS x 6 IPS	6.62	4.33	8.30	11.33
TRl1180	8 IPS x 4 IPS	4.50	3.81	8.44	11.02
TRl1185	8 IPS x 6 IPS	6.62	4.52	10.29	11.81
TRl1188	8 IPS x 8 IPS	8.62	5.18	10.96	12.71
TRl1190	10 IPS x 4 IPS	4.50	3.38	7.77	9.52
TRl1198	12 IPS x 2 IPS	2.37	2.55	7.67	9.74
TRl1200	12 IPS x 4 IPS	4.50	3.38	8.85	9.74
TRl1205	12 IPS x 6 IPS	6.62	4.33	8.30	13.26
TRl1210	12 IPS x 8 IPS	8.62	5.11	10.23	13.85



# MTD

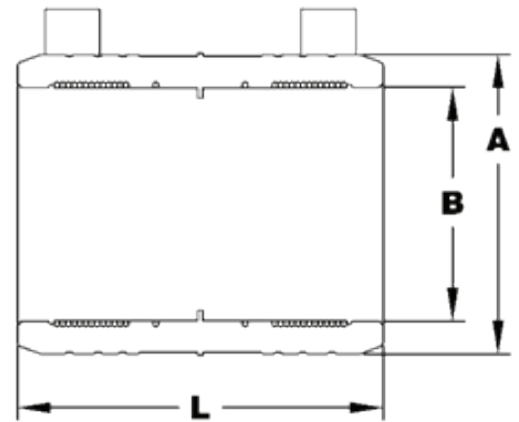
## EF COUPLINGS

PE4710 | 4.7MM TERMINALS | ASTM F1055, F2897, D2513 & D3350



MTD EF Couplings are designed to be as safe and efficient as possible. Each coupling includes integrated stab depth indicators to ensure proper stab depth. As a universal fitting, our couplings can be fused, 40v fusion, via barcode, dedicated resistor, or manually.

PART NO.	SIZE [in]	A [min]	B [min]	L [min]
TRl0005	½ CTS	1.10	0.62	2.86
TRl0075	¾ IPS	1.70	1.06	3.58
TRl0080	1 CTS	1.76	1.13	3.58
TRl0100	1 IPS	1.88	1.32	3.70
TRl0105	1¼ IPS	2.40	1.66	3.93
TRl0120	2 IPS	3.16	2.37	4.62
TRl0130	3 IPS	4.48	3.49	5.51
TRl0140	4 IPS	5.60	4.49	6.25
TRl0160	6 IPS	8.09	6.61	7.79
TRl0180	8 IPS	10.72	8.61	9.25
TRl0190	10 IPS	12.91	10.75	10.12
TRl0195	12 IPS	15.66	12.75	11.18



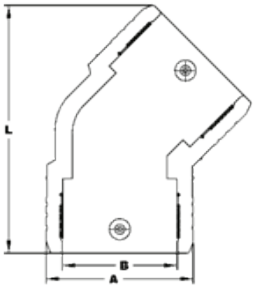
# MTD EF ELBOWS

PE4710 | 4.7MM TERMINALS | ASTM F1055, F2897, D2513 & D3350



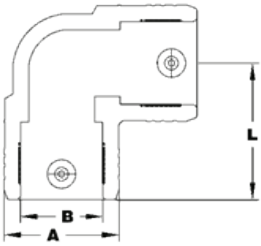
- Universal fittings can be fused in barcode, resistor (dedicated) or manual modes
- 40V Fusion
- Molded from virgin PPI-Listed PE4710/PE100 Resin
- Compliant with ASTM F2897 traceability standards

## 45° ELBOWS



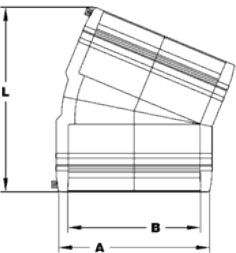
PART NO.	SIZE [in]	A [min]	B [min]	L [min]
TR10420	2 IPS	3.22	2.37	7.27
TR10440	4 IPS	5.56	4.50	9.80
TR10445	6 IPS	8.00	6.61	13.12
TR10450	8 IPS	10.51	8.61	15.13
TR10460	12 IPS	15.76	12.77	21.10

## 90° ELBOWS



PART NO.	SIZE [in]	A [min]	B [min]	L [min]
TR10472	1 CTS	1.85	1.13	2.55
TR10475	2 IPS	3.15	2.37	3.91
TR10485	4 IPS	5.62	4.50	6.44
TR10490	6 IPS	8.13	6.61	7.71
TR10495	8 IPS	10.80	8.61	9.31
TR10498	12 IPS	15.70	12.76	12.95
TR10499F	16 IPS	23.05	16.02	24.61

## 22.5° ELBOWS



PART NO.	SIZE [in]	A [min]	B [min]	L [min]
TR10415	12 IPS	15.50	12.77	17.86

# MTD

## EF ENDCAPS

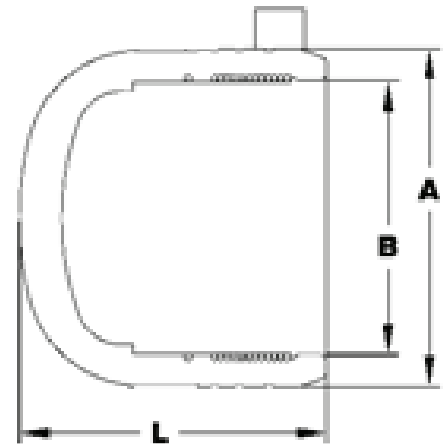
PE4710 | 4.7MM TERMINALS | ASTM F1055, F2897, D2513 & D3350



MTD Endcaps are designed to be as safe and efficient as possible. With a variety of sizes each endcap includes an integrated stab depth indicator to ensure proper stab depth. As a universal fitting, MTD Endcaps can be fused, 40V fusion, via barcode, dedicated resistor, or manually.

- Universal fittings can be fused in barcode, resistor (dedicated) or manual modes
- 40V Fusion
- Molded from virgin PPI-Listed PE4710 / PE100 Resin
- Compliant with ASTM F2897 traceability standards

PART NO.	SIZE [in]	A [min]	B [min]	L [min]
TR104996	1 CTS	1.89	1.13	2.58
TR10500	2 IPS	3.14	2.38	3.34
TR10505	3 IPS	4.52	3.50	4.33
TR10510	4 IPS	5.51	4.50	5.11
TR10515	6 IPS	7.87	6.63	6.41
TR10520	8 IPS	10.99	8.65	8.85





# MTD

## EF REDUCERS

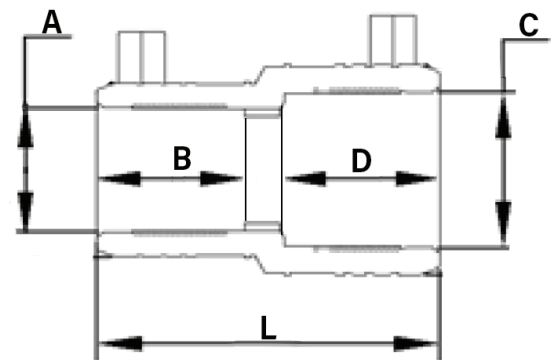
PE4710 | 4.7MM TERMINALS | ASTM F1055, F2897, D2513 & D3350



MTD EF Reducers are designed to be as safe and efficient as possible. Each reducer includes integrated stab depth indicators to ensure proper stab depth. As a universal fitting, our couplings can be fused, 40v fusion, via barcode, dedicated resistor, or manually.

- Universal fittings can be fused in barcode, resistor (dedicated) or manual modes
- 40V Fusion
- Molded from virgin PPI-Listed PE4710 / PE100 Resin
- Compliant with ASTM F2897 traceability standards

PART NO.	SIZE [in]	A [min]	B [min]	C [min]	D [min]	L [min]
TRIo199	¾ IPS x ½ CTS	0.63	1.50	1.05	1.50	3.31
TRIo203	1 CTS x ¾ IPS	1.05	1.73	1.12	1.73	3.54
TRIo210	1 IPS x ¾ IPS	1.05	1.81	1.31	1.81	3.70
TRIo205	1 IPS x 1 CTS	1.12	1.81	1.31	1.81	3.70
TRIo240	2 IPS x 1 IPS	1.31	1.87	2.37	2.32	4.50
TRIo21401	2 IPS x 1¼ CTS	1.39	1.63	2.37	2.32	4.57
TRIo220	4 IPS x 2 IPS	2.37	2.44	4.50	3.15	7.09
TRIo230	6 IPS x 4 IPS	4.51	2.97	6.63	3.86	7.87
TRIo236	8 IPS x 6 IPS	6.61	3.78	8.62	4.29	9.65
TRIo248	12 IPS x 6 IPS	6.63	4.02	12.77	5.28	12.80
TRIo249	12 IPS x 8 IPS	8.62	4.56	12.75	5.27	12.59



# MTD EF TEES

PE4710 | 4.7MM TERMINALS | ASTM F1055, F2897, D2513 & D3350

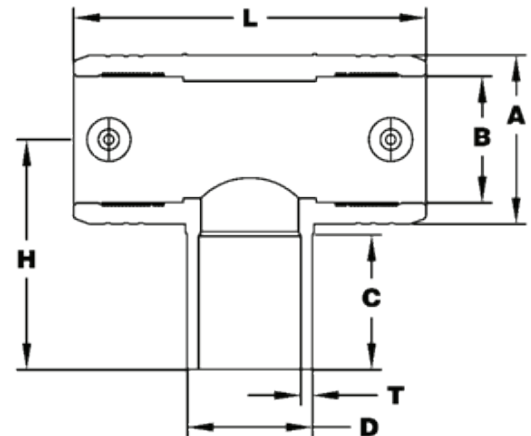


PART NO.	SIZE [in]	A [min]	B [min]	C [min]	D [min]	L [min]
TRI0255	3/4 IPS	1.76	1.05	1.72	1.05	4.21
TRI0320	2 IPS	3.28	2.37	2.67	2.38	6.82
TRI0340	4 IPS	5.65	4.50	3.47	4.50	10.91
TRI0342	4 x 2 IPS	5.65	4.50	2.68	2.38	10.91
TRI0360	6 IPS	8.11	6.63	4.72	6.63	14.96
TRI0370	6 x 4 IPS	8.11	6.63	3.70	4.50	14.96
TRI0380	8 IPS	10.68	8.61	5.39	8.63	18.46
TRI0385	8 x 4 IPS	10.68	8.61	4.08	4.50	18.46
TRI0390	8 x 6 IPS	10.68	8.61	4.72	6.63	18.46

<sup>1</sup> Denotes measurements for fabricated fittings.

MTD EF Tees are designed to be as safe and efficient as possible. With a variety of sizes, both size-on-size and reducing, each tee includes integrated stab depth indicators to ensure proper stab depth. As a universal fitting, our couplings can be fused, 40V fusion, via barcode, dedicated resistor, or manually.

- Universal fittings can be fused in barcode, resistor (dedicated) or manual modes
- 40V Fusion
- Molded from virgin PPI-Listed PE4710 / PE100 Resin
- Compliant with ASTM F2897 traceability standards



# Butt Fusion Fittings & Fabrication

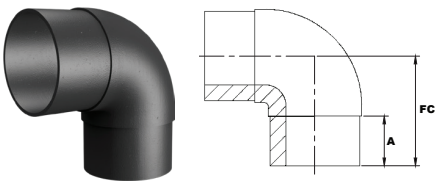
# MTD

## 12-INCH MOLDED BUTT FUSION FITTINGS

Fittings meet ASTM D2513 and ASTM D3261. Fitting outlets meet dimensional requirements of ASTM D3035

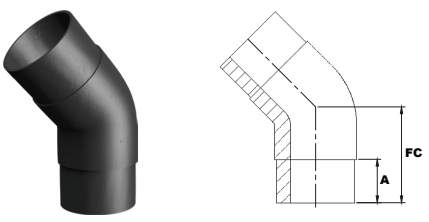
<b>DR</b>	<b>11</b>
Pressure Rating	125 PSI (gas); 200 PSI (water)

### 90°



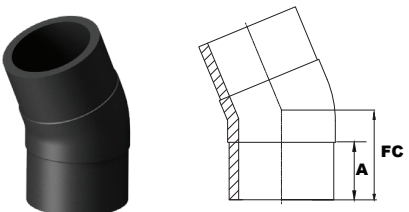
Nominal Size (in)	OD (in)	DR	A (in)	FC (in)	Part Number
12	12.75	11	7	15.28	TRI0498-BF

### 45°



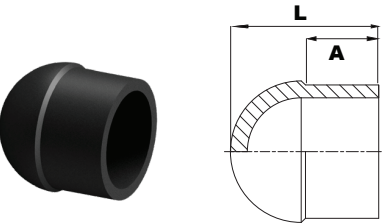
Nominal Size (in)	OD (in)	DR	A (in)	FC (in)	Part Number
12	12.75	11	7	10.953	TRI0460-BF

### 22.5°



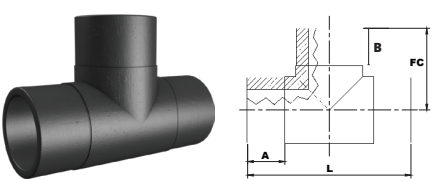
Nominal Size (in)	OD (in)	DR	A (in)	FC (in)	Part Number
12	12.75	11	7	10.955	TRI0415-BF

### END CAP



Nominal Size (in)	OD (in)	DR	A (in)	FC (in)	Part Number
12	12.75	11	7	14.173	TRI0524-BF

### TEE



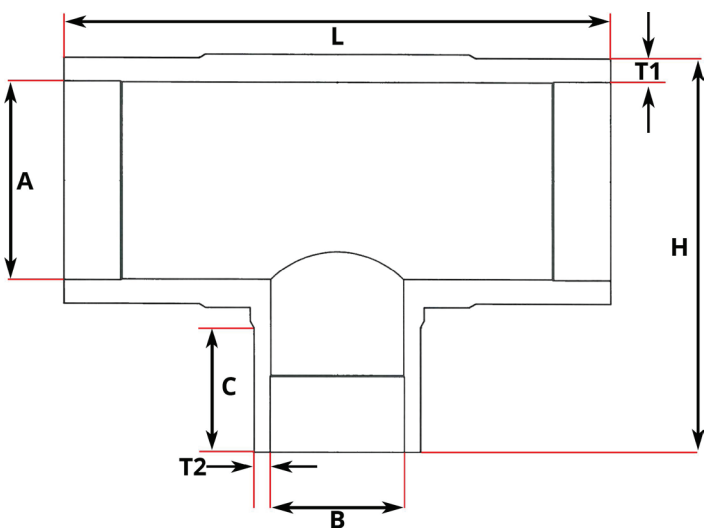
Nominal Size (in)	OD (in)	DR	A (in)	B (in)	L (in)	FC (in)	Part Number
12	12.75	11	6.299	6.496	27.362	14.21	TRI0399-BF



**MTD**

# BUTT FUSION REDUCING TEE

PE4710 | 4.7MM TERMINALS | ASTM F1055, F2897, D2513 & D3350



MTD Butt Fusion Reducing Tees are designed for safety and efficiency. The reducing tee increases your options in the trench to keep your projects flowing.

- Molded from virgin PPI-Listed PE4710 / PE100 Resin
- Compliant with ASTM F2897 traceability standards
- Custom fabrication options utilizing MTD Butt Fusion Reducing Tees are available. Please contact your sales representative to discuss available solutions.

Part Number	Size (in.)	A (min)	B (min)	C (min)	H (min)	L (min)	T1 & T2
TR10394-BF	12x4	12.75	4.50	4.92	18.11	27.55	DR11
TR10396-BF	12x6	12.75	6.62	5.98	20.23	27.55	DR11
TR10398-BF	12x8	12.75	8.62	6.49	20.66	27.55	DR11

# MTD POLYFLOW

FULL PORT POLYETHYLENE BALL VALVES



PART NO.	SIZE	H [in]	L [in]	A [in]	B [in]
TRI10901	2"IPS	8.34	25.00	8.85	2.15
TRI10961	3"IPS	10.70	27.76	9.31	3.18
TRI11001	4"IPS	12.67	29.37	9.75	4.09
TRI11101	6"IPS	16.86	29.20	7.91	6.02
TRI11201	8"IPS	22.48	32.08	7.61	7.84
TRI11251	10"IPS	22.48	32.08	8.59	9.73
TRI11301	12"IPS	26.71	36.96	9.29	11.59
TRI11401	16"IPS	28.83	39.96	11.57	14.55

The above items are available now with an expanded size range coming soon. MTD POLYFLOW valves are stocked in HDPE configurations, but many are available in MDPE and with additional customization options. Please contact your sales representative for information on availability

POLYFLOW, from MTD, is a multipurpose, full port valve solution that is fully pressure rated for DR11 systems. POLYFLOW features a compact size-on-size body for easy fitting. Valve ends are joined to the body via electrofusion providing strength, rigidity, and durability. Various customizations are available to meet your needs making POLYFLOW the easy choice in polyethylene ball valves.

#### Standard Configuration:

- PE4710 (PE100) HDPE
- SDR 11
- Butt Fusion x Butt Fusion

#### Specifications:

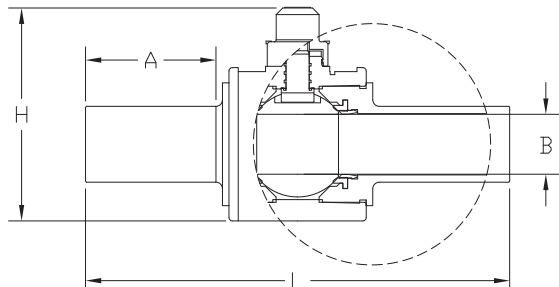
- ASTM D2513
- ASTM F2897
- ASME B16.40
- AWWA C901/C906

#### Features:

- Serialization
- 2" square operator
- 1/4 turn operation

#### Customization:

- Outlet SDR
- MDPE or HDPE pup extensions
- Electrofusion outlets
- X-ray testing
- Gear operators
- Purge port(s)
- Bypass port(s)



## MTD

# PE FABRICATION

Service line configurations and custom projects



MTD PE Fabrication facilities offer custom-fabricated polyethylene assemblies, filling the gaps in molded fitting product offerings and saving you both time and money at the point of installation. All PE fabrication assemblies are drafted by our engineering department and are sent to you for design approval.

These assemblies are ideal when order quantities are too low for a new product mold to be made, or for pre-installation of required components such as excess flow valves

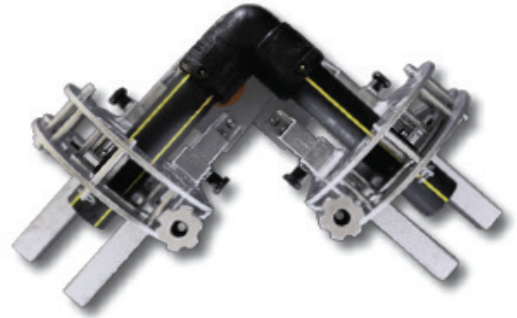
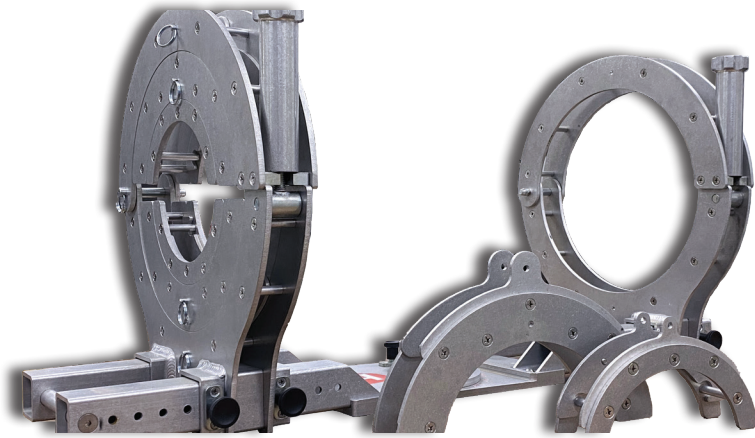
### Our capabilities:

- Fabrication procedures followed and maintained under an ISO 9001:2015 quality management system.
- Equipped to perform any size electrofusion joint and butt fusion joints from ½"CTS through 16".
- Climate-controlled fabrication facility ensures consistent joint integrity.
- Testing facilities including ASTM D1598 & D1599 ensure joint quality.
- All third-party vendors sourced per customer approval.
- All assemblies fully traceable including ASTM F2897 compliance.

# Clamps

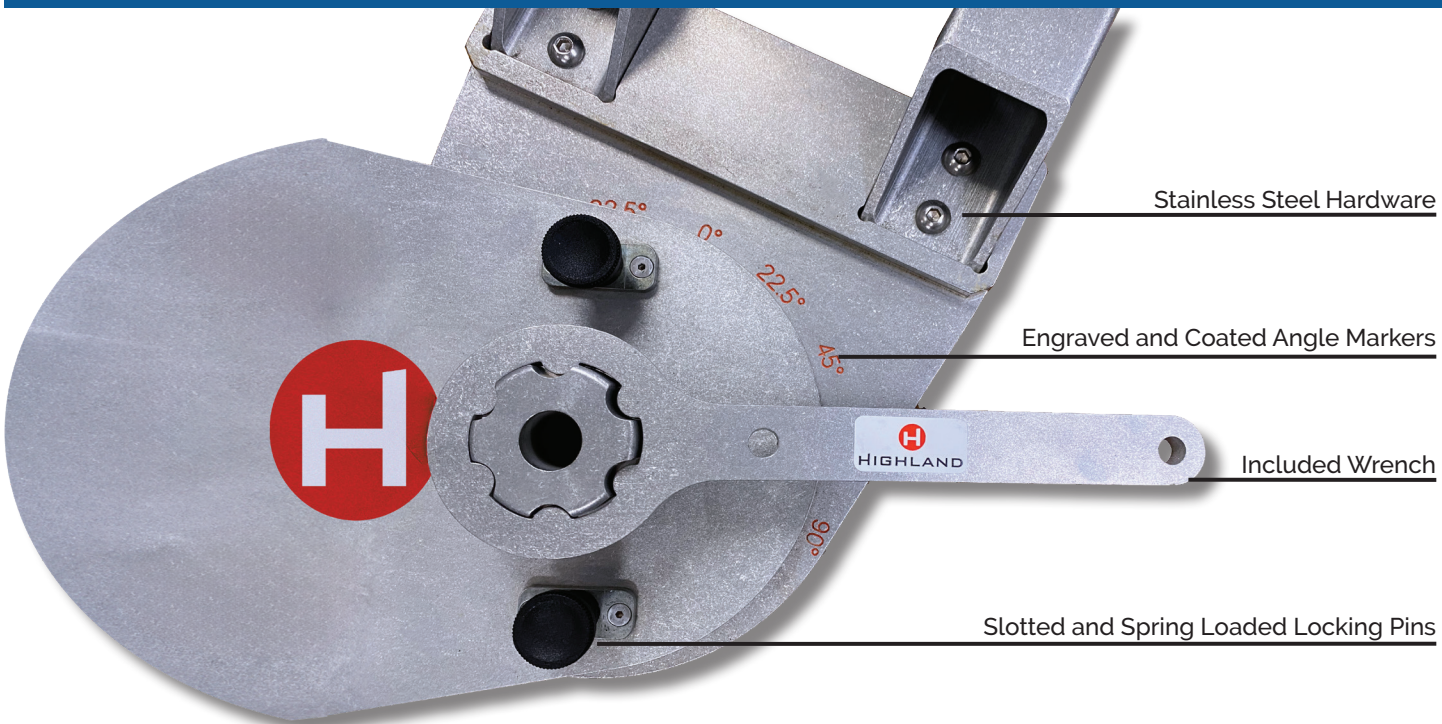


# PIVOTING ELECTROFUSION CLAMP



PART NO.	DESCRIPTION
76060923	2" - 6" IPS Highland Multiclamp
76060920	6" - 12" IPS Highland Multiclamp
76691612	8" - 16" OD Highland Multiclamp

The Highland® Pivoting Electrofusion Clamp is designed and manufactured in the USA. Made from high-quality aluminum for a balance of strength and weight saving, the clamp is available for 2" - 16" fusion jobs at 22.5°, 45°, 67.5°, and 90° with adjustable carriages for various lengths.

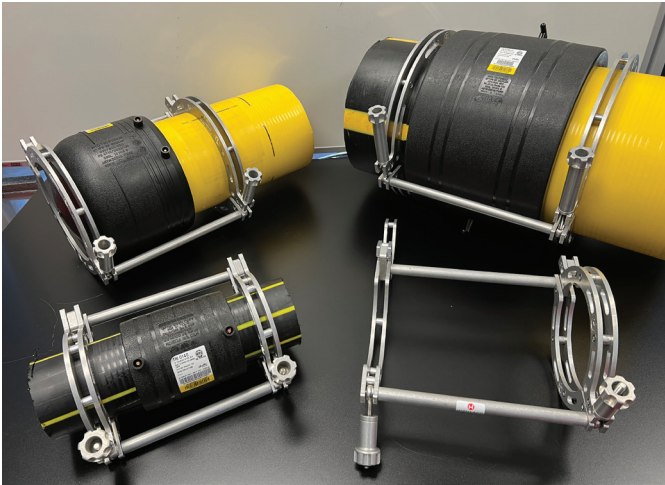


# COMPACT STRAIGHT CLAMP

Available Sizes | 4" IPS, 6" IPS, 8" IPS, 12" IPS



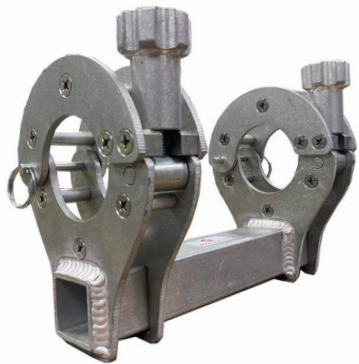
Highland Compact EF Clamps offer the benefits of a secure fuse with the smallest possible footprint in the ditch. These clamps are designed to fit all manufacturers EF Couplings while still providing enough space to verify the proper peel zone. Designed and manufactured in the USA from high quality aluminum, the Highland Compact EF Clamps are your number one lightweight, compact solution for a successful fuse.



Part Number	Jaw Size	Jaw to Jaw Inside	Jaw Profile Front to Back	Jaw Thickness
76060154	4" IPS	9"	9"	1"
76060155	6" IPS	11"	11"	1"
76060156	8" IPS	11 1/2 "	13 3/8"	1"
76060157	12" IPS	13 3/8 "	17 7/8 "	1"

# STRAIGHT CLAMPS

The Highland Straight Clamps are available in 2" - 12" IPS with inserts for reducing sizes. Each straight clamp is made from high-quality aluminum for a balance of strength and weight savings.



**2" IPS Straight Clamp**  
Part # 76670911



**4" IPS Straight Clamp**  
Part # 76670913



**6" IPS Straight Clamp**  
Part # 76670914

**4" Inserts (set of 4)**  
Part# 76671341



**12" IPS Straight Clamp**  
Part # 76060917

**8" Inserts (set of 4)**  
Part# 76061212

# Electrofusion Processors



**H** HIGHLAND

# SUPERCCELL

LITHIUM-ION POWERED ELECTROFUSION PROCESSOR



Introducing Supercell from Highland, a generational leap in electrofusion technology. Supercell is a lithium-ion battery powered processor designed to work all day, everyday. With industry leading capacity, the average operator can get up to two weeks of work on a single charge. Supercell comes standard with GPS, is ASTM F2897 traceability compliant, and equipped for use with mobile applications.

- Reliably fuse up to 200 1" IPS 200 Couplings<sup>1</sup> on a single charge. Supercell will also handle up to 12" IPS couplings.
- 98% reduction in carbon emissions versus traditional generator powered fusion. odb operation also reduces noise pollution by 100% all in a 32lb package.
- 60 Minutes to recharge. From flat to full when using the included faster charger. Achieve enough energy to fuse a 4" coupling<sup>1</sup> in just 25 minutes.
- Fuse 4.0mm or 4.7mm fitting terminals with universal fusion tips.
- Wireless and rechargeable barcode scanner.
- Rugged case for protection and storage.

<sup>1</sup>Tested with MTD TriFusion Couplings

*We know you have work to do, and downtime is the enemy. That is why our commitment to customers is a guaranteed 5 day or less turn around on calibration and service evaluation along with an industry leading 2 year warranty. With multiple service locations across the US and Canada, we are equipped to get you back in operation as soon as possible.*

**H** HIGHLAND

# VORTEX

ELECTROFUSION PROCESSOR



**Operating Type:** Controlled voltage.  
**Operating Modes:** Manual, Bar Code  
**Operating Languages:** **Default:** English  
**Preloaded Options:** French, Spanish  
**On request:** Dutch, German, Portuguese and Russian  
**Operating Temp<sup>1</sup>:** -40°F to 120°F  
**Welding Voltage:** 8 to 48 V ac (39.5 V)  
**Welding Current<sup>2</sup>:** 1 to 60 A ac (true rms)  
**Welding Power:** 8 VA to 2400 VA  
**Welding Time:** 1 to 3000 seconds  
**Supply Protection:** Class 2 – No Earth connection  
**Data log memory:** 2048 fusions  
**Data download/upload:** USB flash memory drive  
**Protection Level:** IP54  
**Supply Voltage:** 120 V ac (+/- 20%) 40 to 70 Hz  
**Supply Current:** 1 to 30 A ac (true rms)  
**Supply Power<sup>3</sup>:** 3,300 W  
**Weight:** 35lbs  
**Size:** 18in x 14in x 7in

ISCO's Highland VORTEX electrofusion machine is a small processor with big power. VORTEX features an active cooling system which allows for a decrease in overall size and weight of the unit. The powerful fan keeps the processor cool while a positive pressure configuration helps keep out dust and debris. VORTEX comes standard with GPS and is ready to meet your ASTM F2897 traceability needs.

- Fuse up to 12" fittings with active cooling for maximum performance
- Features an IP54 rating to weather the elements
- Upgradeable software and mobile application compatible
- Light and compact at 35 lbs. and 18"x14"x7"
- Fuse 4.0mm or 4.7mm fitting terminals with universal fusion tips
- Wireless and rechargeable barcode scanner
- Rugged case for protection and storage



<sup>1</sup>All units now built to extended temperature specification  
<sup>2</sup> Units with serial numbers beginning in ATS welding current: 1 to 50 A ac (true rms)  
<sup>3</sup>30A x 110V = 3300 W. ISCO recommends the use of a non-welding generator with no less than 7500 watts power.  
 ISCO Industries, Inc. has a policy of continuously improving product design, and as such reserve the right to change specification of its products without prior notice and with impunity.

*We know you have work to do, and downtime is the enemy. That is why our commitment to customers is a guaranteed 5 day or less turn around on calibration and service evaluation along with an industry leading 2 year warranty. With multiple service locations across the US and Canada, we are equipped to get you back in operation as soon as possible.*

# MTD MINIMAXX

ELECTROFUSION PROCESSOR



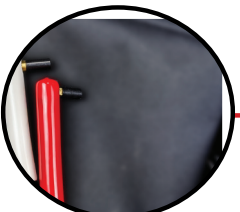
- Compliant with ASTM F2897 traceability standards
- Fuse up to 32" Fittings
- Storage for 11,000+ fusion records. Downloads via Bluetooth and mobile app
- Standard-equipped with GPS
- Perform your own calibration with the AutoCal calibration machine



Rugged Pelican Case for protection and storage



Operation Manual, Lead Tool and Terminal Adapters



Fuse 4.0mm or 4.7mm fitting terminals with included adaptors and 20' output cables  
\*Universal tips available



AutoScan Optical Laser Scanners for easier barcode scanning



**MTD**

# BATTERYFUSE

ELECTROFUSION PROCESSOR



- Compliant with ASTM F2897 traceability standards
- Fuse up to 8" Fittings
- Storage for 11,000+ fusion records. Downloads via Bluetooth and mobile app
- Standard-equipped with GPS
- Perform your own calibration with the AutoCal calibration machine

## Fuse the following fittings<sup>1</sup> with a single charge:

- 30ea. 1¼" ~ 12" Tapping Tees
- 30ea. 2" ~12" Branch Saddles
- 90ea. 1" or smaller coupling-interface fittings<sup>2</sup>
- 18ea. 2" Coupling-Interface Fittings
- 4ea. 3" Coupling-Interface Fittings
- 2ea. 4" or 6" Coupling-Interface Fittings
- 1ea 8" Coupling-Interface Fittings

<sup>1</sup> Quantities based on MTD TRI FUSION fittings and may vary by fitting manufacturer.

<sup>2</sup> Coupling-Interface Fittings include couplings, elbows, tees, endcaps and reducers.



Fuse 4.0mm or 4.7mm fitting terminals with included adapters.



AutoScan Optical Laser Scanners for easier bar code scanning



Rugged Pelican Case for protection and storage

# Tools & Hot Taps

# MTD ROTARY PEELERS



PART NO.	DESCRIPTION
TRI1922C	1 1/4" IPS Rotary Peeler
TRI1924C	2" IPS Rotary Peeler
TRI1926C	3" IPS Rotary Peeler
TRI1928C	4" IPS Rotary Peeler
TRI1930C	6" IPS Rotary Peeler
TRI1932C	8" IPS Rotary Peeler
TRI1934C	12" IPS Rotary Peeler
TRI1938C	16" IPS Rotary Peeler
TRI1936-BLADE	Replacement Blade

MTD Rotary Peelers are designed to deliver the most consistent peel with the lowest amount of effort. Equipped with a floating wear resistant brass blade, each peeler rides on steel ball bearings to ensure smooth operation and even peeling. Each ships in a protective carrying case.



# MTD POLYPEEL

FOR VARIOUS WALL THICKNESSES



MTD Rotary Peelers are designed to deliver the most consistent peel with the lowest amount of effort. Equipped with a floating wear resistant brass blade, each peeler rides on steel ball bearings to ensure smooth operation and even peeling. Each ships in a protective carrying case.

- Additional or specific wall thickness mandrels are available.
- Two or more peelers can be combined in a kit and sold in a single case.

PART NO.	DESCRIPTION
TR1960	½" CTS POLYPEEL
TR1963	½" IPS POLYPEEL
TR1965	¾" IPS POLYPEEL
TR1970	1" CTS POLYPEEL
TR1975	1" IPS POLYPEEL
TR1978	1¼" IPS POLYPEEL
TR1979	1¼" CTS POLYPEEL
TR1980	2" IPS POLYPEEL
TR1962R	Replacement Blade

# MTD POLYTAPP

HOT TAPPING VALVES



COMPONENT	MATERIAL
Body	Polyethylene (PE)
Ends	Polyethylene (PE)
Ball	Polyethylene (PE)
Ball Seat	Buna-n (Rubber)
Supporting Ring	Polypropylene (PP)
Stem	Acetal
Operator	Fiber-Reinforced Polypropylene
Stem O-Ring	Buna-n (Rubber)
Adapter Ground Water Seal	Buna-n (Rubber)

### Specifications:

- Molded From PE4710 / PE3408
- Max Operating Pressure:  
Gas 125psi / Water 250psi
- Min. Required Strength: 10.0 MPa
- Temperature Range: 20°F to 140°F
- Pipe Connection Via Butt Fusion or Electrofusion
- Full Bore
- Short stem or extended stem available
- SDR 11
- ¼ turn operation
- Thread x Electrofusion

### Standards:

- NSF Standard 61
- AWWA Standards C901 & C906
- ASTM Standards F1055, D2513, & D3350

PART NO.	SIZE
TRI1090	2" IPS
TRI1100	4" IPS
TRI1110	6" IPS
TRI1120	8" IPS
TRI1130	12" IPS
TRI1135	14" IPS
TRI1140	16" IPS

# MTD POLYTAPP

HOT TAPPING SYSTEM

The POLYTAPP system from MTD is an easy-to-use solution for hot tapping live gas and water mains. Each tapping machine is light weight and simple to operate. The patented POLYTAPP HDPE ball valve further simplifies the process.



POLYTAPP hot tap valves and saddles are available in 2", 4", 6", and 8" for size-on-size taps. Other saddles are also available for reduced-branch hot taps.



Accessory kits include an exclusive cutter and pilot design that retains shavings behind the coupon as well a tapping adapter, test cap and wrench.



Optional pneumatic drive and reduction gearbox are available for effortless operation.

MACHINE	TRAVEL	WEIGHT	PART NO.
PE25	25"	3.22	TR11082
PE37	37"	5.56	TR11082-37

VALVE	PART NO.
2" Nominal	TR11090
4" Nominal	TR11100
6" Nominal	TR11110
8" Nominal	TR11120

VALVE CLAMP	PART NO.
2" Nominal	TR111300
4" Nominal	TR1113004
6" Nominal	TR1113006
8" Nominal	TR1113008

ACCESSORY KIT	PART NO.
2"	TR11099
4"	TR11109
6"	TR11119
8"	TR11129

NOMINAL SIZE	DIAMETER
2"	1.50"
4"	3.35"
6"	4.72"
8"	5.88"

# Tapping Tees & Accessories

# MTD

## STANDARD TAPPING TEE

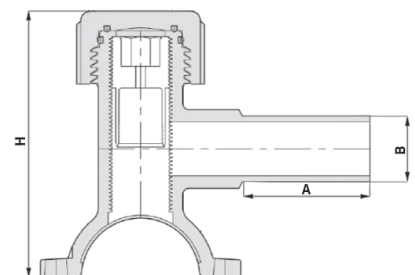
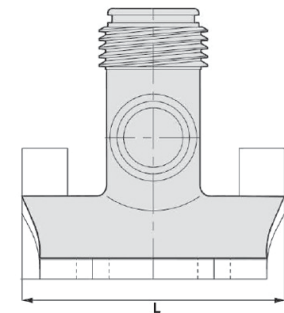
PE4710 | 4.7MM TERMINALS | ASTM F1055, F2897, D2513 & D3350



MTD Tapping Tee cutters were designed for efficient and safe handling. Cutters are bottom-loaded to prevent possible rotation out of the top of the tapping tee. Additionally, when paired with MTD SafeTap tapping tee tool there is no blow by or possibility of tool ejection.

- Integrated clamping mechanism
- Universal fittings can be fused in bar-code, resistor (dedicated), or manual modes
- 40V Fusion
- Molded from virgin PPI-Listed PE4710/PE100 Resin
- Compliant with ASTM F2897 traceability standards

PART NO.	SADDLE [in]	OUTLET [in]	A [min]	B [min]	L [min]	H [min]
TRl0675	1-1/4"CTS	1-1/4"CTS	4.000	1.375	3.465	4.449
TRl0705	1-1/4"IPS	1" CTS	4.000	1.125	3.465	4.449
TRl0710	1-1/4"IPS	3/4"IPS	4.000	1.050	3.465	4.449
TRl0715	1-1/4"IPS	1"IPS	4.000	1.315	3.465	4.449
TRl0720	1-1/4"IPS	1-1/4"CTS	4.000	1.375	3.465	4.449
TRl0725	2 IPS	1/2 CTS	1.93	0.62	4.72	5.17
TRl0740	2 IPS	3/4 IPS	2.01	1.05	4.72	5.17
TRl0745	2 IPS	1 CTS	2.04	1.12	4.72	5.17
TRl0750	2 IPS	1 IPS	2.15	1.32	4.72	5.17
TRl0785	4 IPS	1/2 CTS	1.93	0.62	4.92	5.98
TRl0800	4 IPS	3/4 IPS	2.07	1.05	4.92	5.98
TRl0805	4 IPS	1 CTS	2.04	1.12	4.92	5.98
TRl0810	4 IPS	1 IPS	2.15	1.32	4.92	5.98
TRl0815	6 IPS	1/2 CTS	1.93	0.62	4.92	7.18
TRl0830	6 IPS	3/4 IPS	2.01	1.05	4.92	7.18
TRl0835	6 IPS	1 CTS	2.04	1.12	4.92	7.18
TRl0840	6 IPS	1 IPS	2.15	1.32	4.92	7.18
TRl0865	8 IPS	1 CTS	3.01	1.12	7.41	9.17
TRl0870	8 IPS	1 IPS	2.97	1.32	7.41	9.17
TRl0925	12 IPS	1 CTS	2.98	1.12	8.89	9.43
TRl0930	12 IPS	1 IPS	2.98	1.32	8.89	9.43

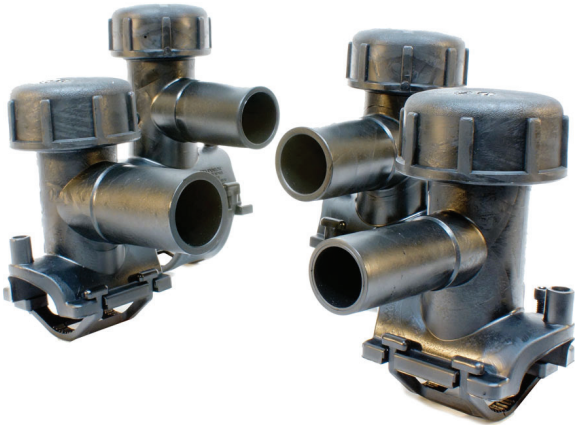


Note : 8" and 12" tapping tees require MTD HV Tapping Tee Tool.

**MTD**

# HIGH VOLUME TAPPING TEE

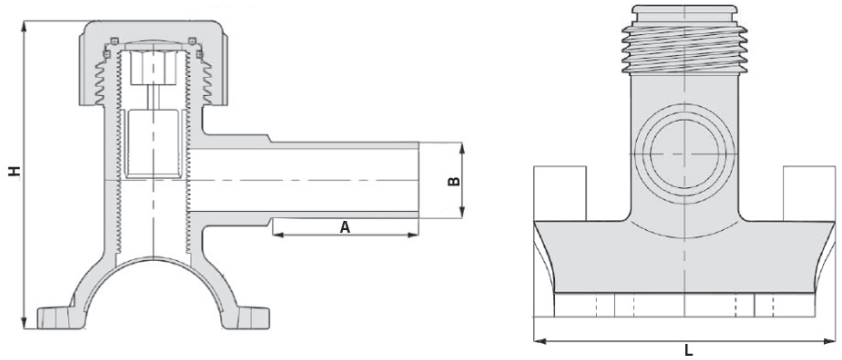
PE4710 | 4.7MM TERMINALS | ASTM F1055, F2897, D2513 & D3350



MTD Tapping Tee cutters were designed to be as efficient and safe as possible. The High-Volume Tapping Tee is equipped with a shut off cutter that once advanced back into the tapped hole, completely shuts off the flow of gas through the outlet. All cutters are bottom-loaded to prevent the possibility of the cutter rotating out of the top of the tapping tee.

- Advanced cutter design allows outlet flow to be shut off after tapping
- Integrated clamping mechanism
- Universal fittings can be fused in bar-code, resistor (dedicated), or manual modes
- 40V Fusion
- Molded from virgin PPI-Listed PE4710 / PE100 Resin
- All fittings are compliant with ASTM F2897 traceability standards

PART NO.	SADDLE	OUTLET*	A [min]	B [min]	L [min]	H [min]
TRl0950-1	2"IPS	1¼"IPS	3.16	1.66	5.51	7.04
TRl0955-1	2"IPS	2"IPS	3.15	2.38	5.51	7.04
TRl0960-1	3"IPS	1¼"IPS	3.17	1.66	5.90	8.06
TRl0965-1	3"IPS	2"IPS	3.19	2.38	5.90	8.06
TRl0970-1	4"IPS	1¼"IPS	3.22	1.66	6.29	8.22
TRl0975-1	4"IPS	2"IPS	3.23	2.38	6.29	8.22
TRl0980-1	6"IPS	1¼"IPS	3.24	1.66	6.24	9.37
TRl0985-1	6"IPS	2"IPS	3.24	2.38	6.24	9.37
TRl0990-1	8"IPS	1¼"IPS	3.56	1.66	7.41	9.17
TRl0995-1	8"IPS	2"IPS	3.54	2.38	7.41	9.17
TRl1010-1	12"IPS	1¼"IPS	3.56	1.66	8.89	9.43
TRl1015-1	12"IPS	2"IPS	3.54	2.38	8.89	9.43





**MTD**

# HV TAPPING TEE TOOLS

FOR MTD TRIFUSION HIGH-VOLUME TAPPING TEES



**1/2" RATCHET DRIVE TOOL**



**T-HANDLE TOOL**

MTD High-Volume Tapping Tee tools were designed to be as efficient and safe as possible. Each tool uses our SafeTap technology, which includes a back-pressure safety adapter to keep the tool in place under line pressure. Additionally, each tool includes an integrated buttress thread polyethylene (PE) cap for zero leak operation.

- Solid steel construction.
- Equipped with travel stops, which bottom out to indicate tap is complete.
- Laser-engraved retraction lines to indicate full retraction of the cutter.
- PE caps are equipped with sealing elements which prevent blow-by during operation.
- Back-pressure safety adapter threads into the top of the cutter, preventing tool movement under pressure.

PART NO.	DESCRIPTION
TRI1785	1/2" Ratchet Drive HV Tapping Tee Tool
TRI1786	T-Handle HV Tapping Tee Tool

*Note : Also to be used on MTD 8" and 12" Standard Tapping Tees.*

# MTD

## TAPPING TEE ACCESSORIES

FOR MTD TRIFUSION STANDARD & HIGH-VOLUME TAPPING TEES



MTD offers multiple accessories designed for use with MTD tapping tees. The unique cap design facilitates the use of a dedicated cap wrench, which puts equal forces on the cap when tightening. Additionally, various test caps are available for joint testing.

- MTD cap wrenches are designed specifically to work with the MTD TriFusion Tapping Tees. This wrench ensures even pressure is applied when tightening and reduces the stress applied to the tee.
- Test caps are available with a test gauge and valve installed or as a raw cap to which you can connect any 1/4" NPT fitting you would like.

PART NO.	DESCRIPTION
TR1783	Standard Tapping Tee Cap Wrench
TR1793	High-Volume Tapping Tee Cap Wrench
TR1779	Standard Tapping Tee Test Cap with 1/4" NPT male threads (no gauge or valve)
TR1781	Standard Tapping Tee Test Cap with 160psi gauge and valve
TR1787	High-Volume Tapping Tee Test Cap with 1/4" NPT male threads (no gauge or valve)
TR1790	High-Volume Tapping Tee Test Cap with 160psi gauge and valve

## MTD

# TAPPING TEE CUTTERS

MTD TRIFUSION HIGH-VOLUME AND STANDARD TAPPING TEES

MTD Tapping Tee cutters are designed to be as efficient and safe as possible. The High-Volume Tapping Tee is equipped with a shutoff cutter that, once advanced back into the tapped hole, completely shuts off the flow of gas through the outlet. All cutters are bottom-loaded to prevent the possibility of the cutter rotating out of the top of the tapping tee.



### HIGH-VOLUME TAPPING TEE CUTTER

**High-Volume Tap Diameter:**

2" mains : 1.34"Ø

3" thru 12" mains: 1.77"Ø

**Tapping Torque:**

High-Volume: 108.45 lb/ft

**High-Volume Compatible Wall Thicknesses:**

2" thru 8" mains : DR7 or thinner

12" mains: DR11 or thinner

**5/8" Hex Drive**



### STANDARD TAPPING TEE CUTTER

**Standard Tap Diameter:**

1 ¼" mains : 0.76"Ø

2" thru 6" mains: 1.00"Ø

8" thru 12" mains: 1.77"Ø

**Tapping Torque:**

Standard: 21.69 lb/ft

**Standard Compatible Wall Thicknesses:**

1 ¼" thru 8" mains : DR7 or thinner

12" mains: DR11 or thinner

**5/8" Hex Drive**

# Steel Control Fittings

**MTD**

# SPHERICAL WELD TEES

ANSI 150



ANSI 150 Spherical Weld Tees	
Nominal Size	Part Number
2"	0200-0285S-0000
3"	0300-0285S-0000
4"	0400-0285S-0000
6"	0600-0285S-0000
8"	0800-0285S-0000
10"	1000-0285S-0000
12"	1200-0285S-0000

*\*Plug setting pressure limited to pressure rating of completion machine*

MTD Spherical Weld Tees are manufactured under and ISO 9001-compliant quality management system. Each fitting is designed, manufactured, and tested to be used on pipelines operating in accordance with ASME B31.8 and DOT 192. All welding and inspection is performed per API 1104 and ASME section IX.

- ANSI 150: 285 PSI @ 100°F ~ 245 PSI @ 180°F
- Compatible with existing plugging and stopping equipment
- 2" & 3" threaded solid plug and threaded cap
- 4" - 12" flanged with completion plug, o-ring, blind flange and cap screws.
- Low profile: side or bottom outlet

Valve to Fitting Adapters	
Nominal Size	Part Number
4"	0400-0285A-0010
6"	0600-0285A-0010
8"	0800-0285A-0010
10"	1000-0285A-0010
12"	1200-0285A-0010
6" x 8"	0608-0285A-0010

# MTD

## SPHERICAL WELD TEES

ANSI 300



MTD Spherical Weld Tees are manufactured under and ISO 9001-compliant quality management system. Each fitting is designed, manufactured, and tested to be used on pipelines operating in accordance with ASME B31.8 and DOT 192. All welding and inspection is performed per API 1104 and ASME section IX.

- ANSI 300: 740 PSI @ 100°F ~ 675 PSI @ 180°F
- Compatible with existing plugging and stopping equipment
- 2" & 3" threaded solid plug and threaded cap
- 4" - 12" flanged with completion plug, o-ring, blind flange and cap screws.
- Low profile: side or bottom outlet

### ANSI 300 Spherical Weld Tees

Nominal Size	Part Number
2"	0200-0740S-0000
3"	0300-0740S-0000
4"	0400-0740S-0000
6"	0600-0740S-0000
8"	0800-0740S-0000
10"	1000-0740S-0000
12"	1200-0740S-0000

### Valve to Fitting Adapters

Nominal Size	Part Number
4"	0400-0285A-0010
6"	0600-0285A-0010
8"	0800-0285A-0010
10"	1000-0285A-0010
12"	1200-0285A-0010
6" x 8"	0608-0285A-0010



### Spare ANSI 300 O-Rings

Nominal Size	Part Number
2"	9000-0200P-0000
3"	9000-0300P-0000
4"	9000-0400P-0000
6"	9000-0600P-0000
8"	9000-0800P-0000
10"	9000-1000P-0000
12"	9000-1200P-0000

*\*Plug setting pressure limited to pressure rating of completion machine*



# MTD WELD FITTINGS

ANSI 150



MTD Weld Fittings are manufactured under and ISO 9001-compliant quality management system. Each fitting is designed, manufactured, and tested for use on pipelines operating in accordance with ASME B31.8 and DOT 192. All welding and inspection is performed per API 1104 and ASME section IX.

- 285 PSI @ 100°F ~ 245 PSI @ 180°F
- Compatible with existing plugging and stopping equipment
- 1¼" - 3" threaded solid plug and threaded cap
- 4" - 12" flanged with completion plug, o-ring, blind flange and cap screws.

ANSI 150 Weld Fittings	
Nominal Size	Part Number
1¼"	0125-0285W-0000
2"	0200-0285W-0000
3"	0300-0285W-0000
4"	0400-0285W-0000
6"	0600-0285W-0000
8"	0800-0285W-0000
10"	1000-0285W-0000
12"	1200-0285W-0000
3" x 4"	0304-0285W-0000
4" x 6"	0406-0285W-0000
6" x 8"	0608-0285W-0000
8" x 10"	0810-0285W-0000
8" x 12"	0812-0285W-0000



ANSI 150 Flat Bottom Weld Fittings	
Nominal Size	Part Number
3"	0300-0285TFB-0000



Valve to Fitting Adapters	
Nominal Size	Part Number
4"	0400-0285A-0010
6"	0600-0285A-0010
8"	0800-0285A-0010
6" x 8"	0608-0285A-0010

# MTD WELD TEES

ANSI 150



MTD Weld Tees are manufactured under an ISO 9001-compliant quality management system. Each fitting is designed, manufactured, and tested for use on pipelines operating in accordance with ASME B31.8 and DOT 192. All welding and inspection is performed per API 1104 and ASME section IX.

- 285 PSI @ 100°F ~ 245 PSI @ 180°F
- Compatible with existing plugging and stopping equipment
- 1¼" - 3" threaded solid plug and threaded cap
- 4" - 12" flanged with completion plug, o-ring, blind flange and cap screws.

ANSI 150 Weld Tees	
Nominal Size	Part Number
1¼"	0125-0285T-0000
2"	0200-0285T-0000
3"	0300-0285T-0000
4"	0400-0285T-0000
6"	0600-0285T-0000
8"	0800-0285T-0000
10"	1000-0285T-0000
12"	1200-0285T-0000
3" x 4"	0304-0285T-0000
4" x 6"	0406-0285T-0000
6" x 8"	0608-0285T-0000
8" x 10"	0810-0285T-0000
8" x 12"	0812-0285T-0000

ANSI 150 Flat Bottom Weld Tees	
Nominal Size	Part Number
2"	0200-0285TFB-00001
3"	0300-0285TFB-0000
4"	0400-0285TFB-0000
6"	0600-0285TFB-0000
8"	0800-0285TFB-0000

Valve to Fitting Adapters	
Nominal Size	Part Number
4"	0400-0285A-0010
6"	0600-0285A-0010
8"	0800-0285A-0010
6" x 8"	0608-0285A-0010

# Steel Products



**MTD**

# STEEL FABRICATION

CUSTOM METER SETS, REGULATOR STATIONS, STRAINERS, LAUNCHERS AND MORE



MTD provides innovative and safe solutions to our customers. Our professional staff is ready to assist you in your custom steel fabrication design. From large to small, our state-of-the-art fabrication facilities are equipped to handle it all.

## OUR SERVICES

MTD Steel Fabrication facilities employ a certified ISO 9001:2015 quality management system in order to provide customers with industry-leading quality. Our welders and engineers have extensive knowledge of industry standards like API 1104 and PHMSA 49 CFR § 192. Each facility has at least one American Welding Society Certified Welding Inspector on staff.

Contact us today to discuss your needs.

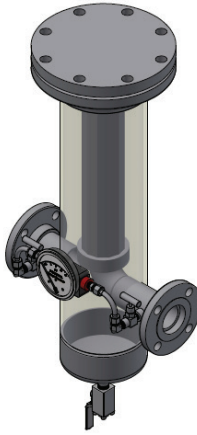
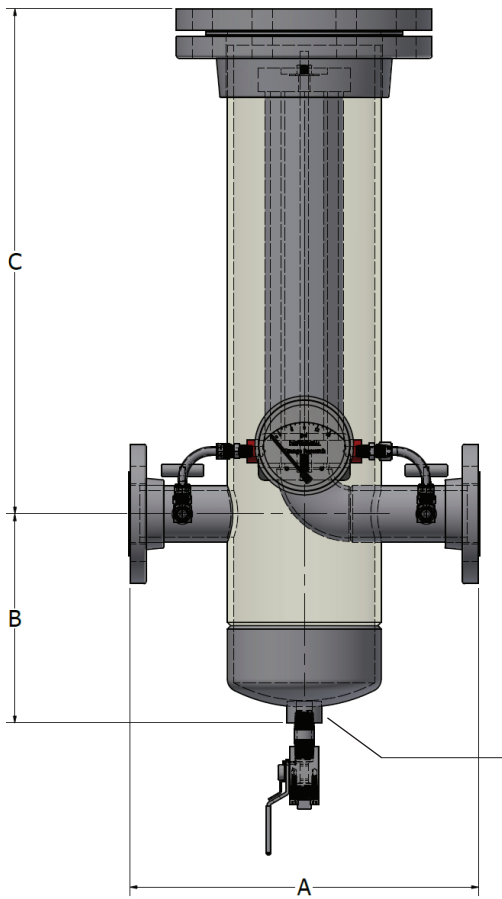




**MTD**

# CARBON STEEL FILTERS

ANSI 150, 300 & 600 | 99.5% Retention @ 2-3 Microns



Ships fully assembled and tightened, incl. differential gauge & valves.

1/2" F-NPT drain w/ valve & plug (all sizes)

ISCO's MTD Carbon Steel Filters offer efficient and highly effective protection against fine particulate. Our filter elements capture 99.5% of particles sized 2-3 microns, at a maximum pressure drop of only 0.06 psig. Filter housings are coated with a 3-stage epoxy/urethane process with a minimum build of 12 mils for a lifetime of reliable service. Our API 1104 qualified welders and procedures, NSF certified ISO 9001 program, and robust pressure testing protocols ensure a top-quality product, and peace of mind!

ANSI	A [in]			B [in]			C [in]			Weight (Approx.)		
	150	300	600	150	300	600	150	300	600	150	300	600
2"	15-1/8	15-5/8	16-3/8	9	9	9	21-5/8	21-1/2	21-1/2	150	210	290
3"	18-1/8	18-7/8	19-5/8	10	10	10	27	27	27	200	280	360
4"	19-1/8	19-7/8	21-5/8	11	11	11	28-5/8	28-5/8	28-5/8	260	380	450
6"	23	23-3/4	27-1/8	15	15	15	34	34	34	440	580	720

Particle Retention: 99.5% @ 2-3µm, 99.7% @ 3-4µm, 99.8% @ 4-10µm, 99.9% over 10µm



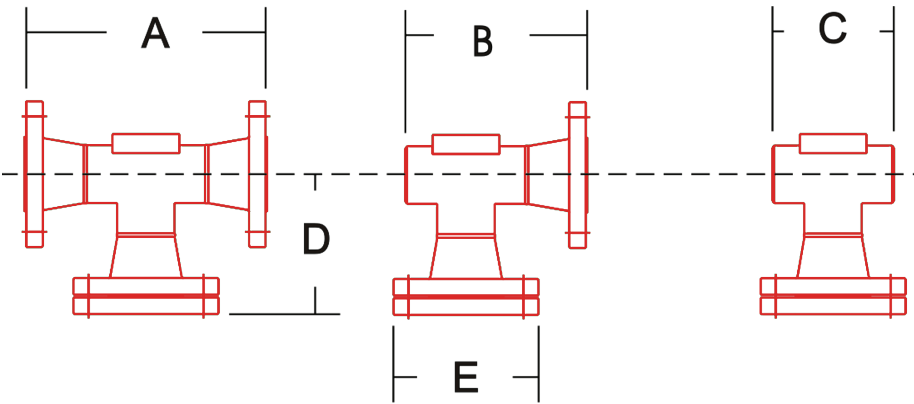
**MTD**

# CARBON STEEL STRAINERS

ANSI 150, 300 & 600 | weld x weld, flange x flange, weld x flange



MTD Carbon Steel Strainers are affordable and highly effective with 100 mesh stainless steel screens to protect downstream equipment from loose scale, weld beads, grit and other foreign materials while synthetic Kevlar fiber (nitrile binder) gaskets ensure an air-tight seal. Offered with a flanged ball valve for easy cleaning of the strainer.



ANSI	A [in]			B [in]			C [in]			D [in]			E [in]		
	150	300	600	150	300	600	150	300	600	150	300	600	150	300	600
2"	10.00	10.50	10.76	7.50	7.77	7.80	5.00	5.00	5.00	5.75	6.16	6.38	6.00	6.50	6.50
3"	12.25	12.99	13.25	9.50	9.87	1.00	6.75	6.75	6.75	7.07	7.62	7.88	7.50	8.25	8.25
4"	14.25	15.76	16.50	11.25	11.69	12.31	8.25	8.25	8.25	8.07	8.76	9.63	9.00	10.00	10.75
6"	18.25	19.01	20.49	14.75	15.13	15.87	11.25	11.25	11.25	10.13	10.95	12.17	11.00	12.50	14.00
8"	22.00	22.76	24.50	18.00	18.38	19.25	14.00	14.00	14.00	12.12	13.00	14.75	13.50	15.00	16.50

**MTD**

# CARBON STEEL STRAINERS

ANSI 150, 300 & 600 | weld x weld, flange x flange, weld x flange

2" Differential Flow Rate (MSCFH)							
PSIG	1/2" WC	1" WC	5" WC	10" WC	20" WC	1 PSID	2 PSID
10	2	3	7	11	15	18	25
150	6	9	19	27	39	46	65
300	8	12	27	38	54	63	89
600	12	17	37	53	75	88	125
1000	15	21	48	68	96	113	160

3" Differential Flow Rate (MSCFH)							
PSIG	1/2" WC	1" WC	5" WC	10" WC	20" WC	1 PSID	2 PSID
10	7	9	21	30	42	50	70
150	17	24	54	76	108	128	181
300	24	34	75	106	150	176	279
600	33	47	104	148	209	246	348
1000	43	60	134	191	279	319	451

4" Differential Flow Rate (MSCFH)							
PSIG	1/2" WC	1" WC	5" WC	10" WC	20" WC	1 PSID	2 PSID
10	11	15	34	49	69	81	114
150	28	40	89	125	177	209	296
300	39	55	123	179	245	289	469
600	54	77	171	242	343	404	571
1000	70	98	220	311	440	519	734

6" Differential Flow Rate (MSCFH)							
PSIG	1/2" WC	1" WC	5" WC	10" WC	20" WC	1 PSID	2 PSID
10	48	67	151	213	301	355	501
150	123	174	389	550	778	916	1295
300	170	240	538	760	1075	1266	1790
600	238	336	752	1063	1503	1769	2501
1000	305	432	966	1366	1931	2272	3214

8" Differential Flow Rate (MSCFH)							
PSIG	1/2" WC	1" WC	5" WC	10" WC	20" WC	1 PSID	2 PSID
10	68	97	217	306	433	510	721
150	177	250	559	791	1118	1316	1861
300	244	345	773	1093	1546	1819	2572
600	342	483	1080	1528	2161	2543	3596
1000	439	621	1389	1963	2776	3267	4620

# Miscellaneous Fittings

# BAGSTOP FITTINGS FOR POLYETHYLENE

PE3408 & PE4710 | 125 PSI | ASTM F1055 & D2513



PART NO.	DESCRIPTION
TRI1339	3" X 4" STOPPER FITTING 4.7MM
TRI1340	3" X 6" STOPPER FITTING 4.7MM
TRI1341	3" X 8" STOPPER FITTING 4.7MM
TRI1342	3" X 10" STOPPER FITTING 4.7MM
TRI1343	3" X 12" STOPPER FITTING 4.7MM

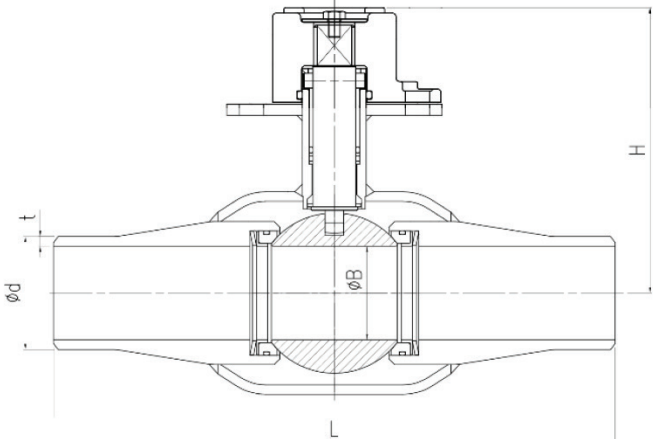
ISCO's Bagstop Fittings are engineered to universally fit most conventional steel tapping and plugging equipment. These fittings are designed to eliminate the need for squeezing, offering an easy installation process that requires minimal excavation. They are compatible with all electrofusion processors, supporting various modes including resistor pin mode, dedicated mode, and manual mode. Each Bagstop fitting is provided with a bottom carriage, eliminating the need for additional clamping. This comprehensive design ensures a user-friendly experience and efficient operation.

**MTD**

# HISEAL BALL VALVES

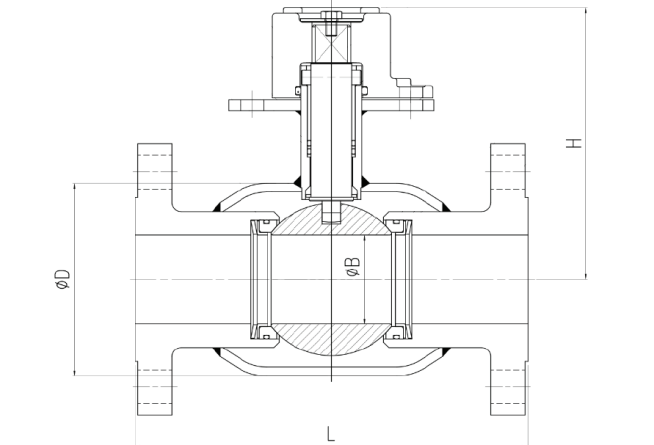
ANSI 300 | WELD X WELD | FLANGE X FLANGE

Each and every MTD HiSeal valve is manufactured in accordance with API and ASME standards. Each valve meets or exceeds Code of Federal Regulations Title 49, Part 192, is individually serialized and is fully ASTM F2897 compliant. Various testing and valve options are available.



Weld x Weld Floating Ball				
Size	L	H	øB	ød
2"	11.8	6.37	1.97	2.89
3"	13.8	8.35	3.07	4.31
4"	15.7	8.88	4.02	5.50
6"	16.1	10.71	5.91	7.51
8"	17.0	19.41	7.83	10.33

\* Sizes displayed in inches



Flange x Flange Floating Ball				
Size	L	H	øB	ød
2"	8.5	6.37	1.97	4.25
3"	11.14	8.35	3.07	6.26
4"	12.00	8.88	4.02	7.63
6"	15.88	10.71	5.91	7.51
8"	19.75	19.41	7.83	10.33

\* Sizes displayed in inches



**MTD**

# PURGE & EQUALIZATION FITTING

RATED AT 1480 PSI AT 180°F



The MTD Purge & Equalization Fitting is used for the blow down of an isolated pipe section following a line stopping operation. Each fitting is manufactured under an ISO 9001 compliant quality management system.

The MTD Purge & Equalization is designed, manufactured and tested per the following:

- ASME/ANSI B31.8 (Gas Pipelines)
- ASME/ANSI B31.4 (Liquid Pipelines)
- ASME/ANSI B31.3 (Chemical Plants & Refineries)
- ASME/ANSI B31.1 (Power Plants)
- DOT 192 & 195 (Federal Regulations for Gas & Liquid Pipelines)

The MTD Purge & Equalization is marked in accordance with MSS SP 25.

Part Number	Description
0200-1480P&E-0000	2" PURGE & EQUALIZATION FITTING